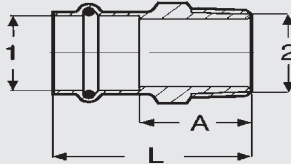
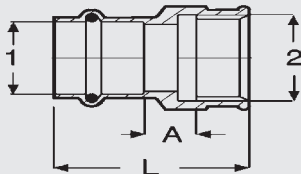


Dimensional Documentation

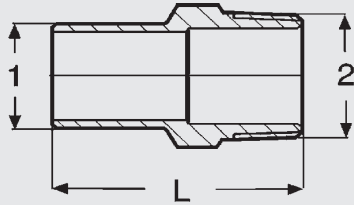


Adapter P x MNPT					
Stock Code	Size		Material	A (in)	L (in)
	1	2			
79210	1/2"	3/8" NPT	Bronze	0.96	1.713
79215	1/2"	1/2" NPT	Bronze	1.12	1.870
79220	1/2"	3/4" NPT	Bronze	1.22	1.969
79225	3/4"	1/2" NPT	Bronze	1.18	2.087
79230	3/4"	3/4" NPT	Bronze	1.18	2.087
79235	3/4"	1" NPT	Bronze	1.42	2.323
79240	1"	3/4" NPT	Bronze	1.32	2.224
79245	1"	1" NPT	Bronze	1.46	2.362
79250	1"	1-1/4" NPT	Bronze	1.73	2.638
79255	1-1/4"	1" NPT	Bronze	1.42	2.441
79260	1-1/4"	1-1/4" NPT	Bronze	1.54	2.559
79265	1-1/4"	1-1/2" NPT	Bronze	1.65	2.677
79270	1-1/2"	1-1/4" NPT	Bronze	1.54	2.953
79275	1-1/2"	1-1/2" NPT	Bronze	1.54	2.953
79280	1-1/2"	2" NPT	Bronze	1.83	3.248
79285	2"	1-1/2" NPT	Bronze	1.67	3.248
79290	2"	2" NPT	Bronze	1.67	3.248

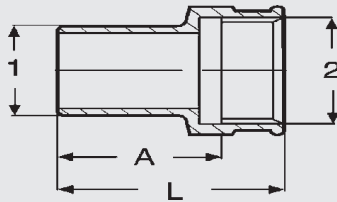


Adapter P x FNPT					
Stock Code	Size		Material	A (in)	L (in)
	1	2			
79295	1/2"	3/8" NPT	Bronze	0.224	1.378
79300	1/2"	1/2" NPT	Bronze	0.291	1.575
79305	1/2"	3/4" NPT	Bronze	0.394	1.693
79310	3/4"	1/2" NPT	Bronze	0.331	1.772
79315	3/4"	3/4" NPT	Bronze	0.394	1.850
79320	1"	1/2" NPT	Bronze	0.252	1.693
79325	1"	3/4" NPT	Bronze	0.394	1.850
79330	1"	1" NPT	Bronze	0.480	2.047
79335	1"	1-1/4" NPT	Bronze	0.539	2.126
79340	1-1/4"	1/2" NPT	Bronze	0.374	1.929
79345	1-1/4"	1" NPT	Bronze	0.205	1.890
79350	1-1/4"	1-1/4" NPT	Bronze	0.382	2.087
79355	1-1/4"	1-1/2" NPT	Bronze	0.461	2.165
79360	1-1/2"	1-1/4" NPT	Bronze	0.382	2.480
79365	1-1/2"	1-1/2" NPT	Bronze	0.382	2.480
79370	2"	2" NPT	Bronze	0.445	2.717

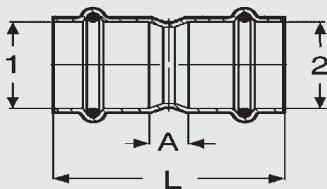
Dimensional Documentation



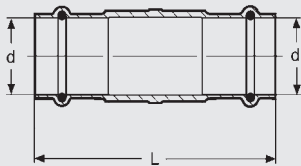
Adapter FTG x MNPT			
Stock Code	Size	Material	L (in)
	1 2		
79375	1/2" x 3/8" NPT	Bronze	1.732
79380	1/2" x 1/2" NPT	Bronze	1.969
79385	1/2" x 3/4" NPT	Bronze	2.047
79390	3/4" x 1/2" NPT	Bronze	2.028
79395	3/4" x 3/4" NPT	Bronze	2.146
79400	1" x 3/4" NPT	Bronze	2.146
79405	1" x 1" NPT	Bronze	2.362
79410	1-1/4" x 1-1/4" NPT	Bronze	2.657
79415	1-1/2" x 1-1/2" NPT	Bronze	2.051
79420	2" x 2" NPT	Bronze	3.543



Adapter FTG x FNPT				
Stock Code	Size	Material	A (in)	L (in)
	1 2			
79425	1/2" x 3/8" NPT	Bronze	1.031	1.437
79430	1/2" x 1/2" NPT	Bronze	1.118	1.654
79435	1/2" x 3/4" NPT	Bronze	1.181	1.732
79440	3/4" x 1/2" NPT	Bronze	1.217	1.752
79445	3/4" x 3/4" NPT	Bronze	1.256	1.811
79455	1" x 1/2" NPT	Bronze	1.433	1.969
79460	1-1/4" x 1/2" NPT	Bronze	1.630	2.165
79450	1" x 1" NPT	Bronze	1.307	1.969
79465	1-1/4" x 1-1/4" NPT	Bronze	1.484	2.165
79470	1-1/2" x 1-1/2" NPT	Bronze	1.878	2.559
79475	2" x 2" NPT	Bronze	2.335	3.031



Coupling P x P with Stop				
Stock Code	Size	Material	A (in)	L (in)
	1			
78047	1/2"	Copper	0.236	1.732
78052	3/4"	Copper	0.394	2.205
78057	1"	Copper	0.394	2.205
78062	1-1/4"	Copper	0.394	2.441
78067	1-1/2"	Copper	0.394	3.307
78072	2"	Copper	0.472	3.622



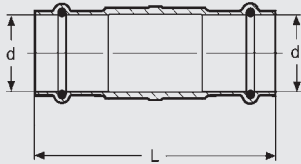
Coupling P x P No Stop			
Stock Code	Size	Material	L (in)
	1		
78172	1/2"	Copper	1.732
78177	3/4"	Copper	2.205
78182	1"	Copper	2.205
78187	1-1/4"	Copper	2.441
78192	1-1/2"	Copper	3.307
78197	2"	Copper	3.622

Viega... The global leader in plumbing and heating systems.

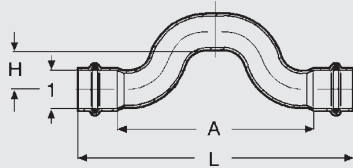
301 N. Main, 9th Floor • Wichita, KS 67202 • Ph: 800-976-9819 • Fax: 800-976-9817 • E-Mail: service@viega.com • www.viega.com



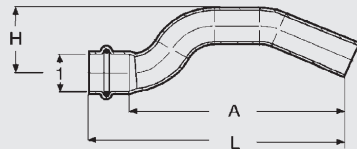
Dimensional Documentation



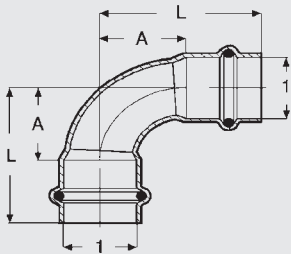
Coupling P x P Extended No Stop			
Stock Code	Size	Material	L (in)
	1		
79005	1/2"	Copper	2.9
79010	3/4"	Copper	3.3
79015	1"	Copper	3.7
79020	1-1/4"	Copper	4.1
79025	1-1/2"	Copper	4.7
79030	2"	Copper	5.2



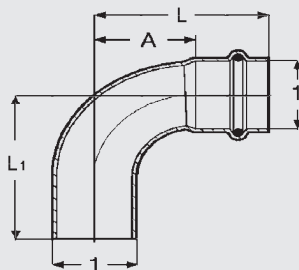
Cross-Over P x P					
Stock Code	Size	Material	A (in)	L (in)	H (in)
	1				
77742	1/2"	Copper	3.622	5.118	0.772
77747	3/4"	Copper	4.488	6.339	0.902



Cross-Over FTG x P Close Rough					
Stock Code	Size	Material	A (in)	L (in)	H (in)
	1				
78137	1/2"	Copper	3.835	4.583	1.098
78142	3/4"	Copper	4.638	5.543	1.539



Elbow 90° P x P Close Rough				
Stock Code	Size	Material	A (in)	L (in)
	1			
77317	1/2"	Copper	0.748	1.496
77322	3/4"	Copper	1.039	1.945
77327	1"	Copper	1.323	2.228
77332	1-1/4"	Copper	1.654	2.677
77337	1-1/2"	Copper	1.984	3.402
77342	2"	Copper	2.551	4.126

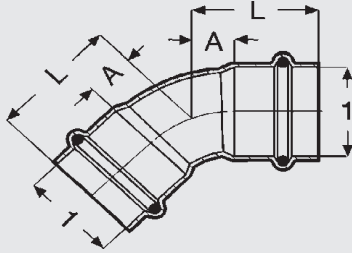


Elbow 90° FTG x P Close Rough					
Stock Code	Size	Material	A (in)	L (in)	L1 (in)
	1				
77347	1/2"	Copper	0.748	1.496	1.535
77352	3/4"	Copper	1.039	1.945	1.984
77357	1"	Copper	1.323	2.228	2.268
77362	1-1/4"	Copper	1.654	2.677	2.756
77367	1-1/2"	Copper	1.984	3.402	3.480
77372	2"	Copper	2.551	4.126	4.205

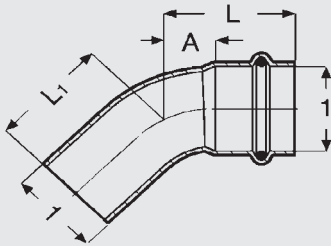
Viega... The global leader in plumbing and heating systems.

301 N. Main, 9th Floor • Wichita, KS 67202 • Ph: 800-976-9819 • Fax: 800-976-9817 • E-Mail: service@viEGA.com • www.viEGA.com

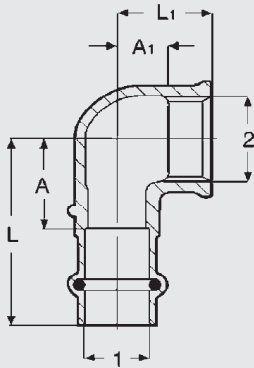
Dimensional Documentation



Elbow 45° P x P				
Stock Code	Size	Material	A (in)	L (in)
	1			
77607	1/2"	Copper	0.295	1.043
77612	3/4"	Copper	0.433	1.339
77617	1"	Copper	0.551	1.457
77622	1-1/4"	Copper	0.685	1.709
77627	1-1/2"	Copper	0.823	2.240
77632	2"	Copper	1.059	2.634



Elbow 90° FTG x P					
Stock Code	Size	Material	A (in)	L (in)	L1 (in)
	1				
77637	1/2"	Bronze	0.311	1.059	1.098
77642	3/4"	Bronze	0.433	1.339	1.374
77647	1"	Bronze	0.551	1.457	1.492
77652	1-1/4"	Bronze	0.685	1.709	1.787
77657	1-1/2"	Bronze	0.823	2.240	2.319
77662	2"	Bronze	1.059	2.634	2.709

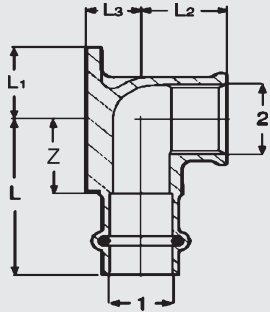


Elbow 90° P x FNPT						
Stock Code	Size	Material	A (in)	A1 (in)	L (in)	L1 (in)
	1 2					
79520	1/2" x 3/8" NPT	Bronze	0.945	0.295	1.693	0.728
79525	1/2" x 1/2" NPT	Bronze	0.984	0.331	1.732	0.866
79530	1/2" x 3/4" NPT	Bronze	1.142	0.409	1.890	0.965
79540	3/4" x 3/4" NPT	Bronze	1.150	0.488	2.055	1.043
79535	3/4" x 1/2" NPT	Bronze	1.142	0.472	2.047	1.004
79545	1" x 1/2" NPT	Bronze	1.299	0.709	2.205	1.260
79550	1" x 1" NPT	Bronze	1.417	0.618	2.323	1.280
79560	1-1/4" x 1-1/4" NPT	Bronze	1.575	0.841	2.598	1.516
79565	1-1/2" x 1-1/2" NPT	Bronze	1.614	1.012	3.031	1.693
79570	2" x 2" NPT	Bronze	2.244	1.469	3.819	2.165

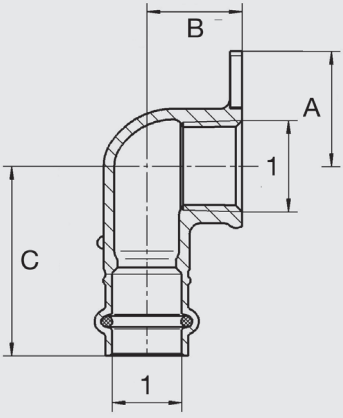
Viega... The global leader in plumbing and heating systems.

301 N. Main, 9th Floor • Wichita, KS 67202 • Ph: 800-976-9819 • Fax: 800-976-9817 • E-Mail: service@viega.com • www.viega.com

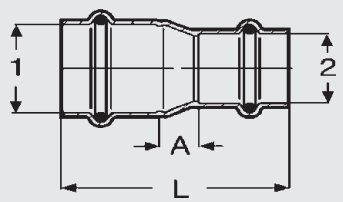
Dimensional Documentation



Elbow Drop 90° P x F with Wall Plate							
Stock Code	Size	Material	L (in)	L1 (in)	L2 (in)	L3 (in)	Z (in)
	1	2					
79185	1/2" x 3/8" NPT	Bronze	1.770	0.830	0.510	0.730	1.020
79190	1/2" x 1/2" NPT	Bronze	1.732	0.835	0.866	0.512	0.984
79195	3/4" x 3/4" NPT	Bronze	2.047	1.181	1.122	0.835	1.142



Hi Ear 90° P x FNPT					
Stock Code	Size	Material	A (in)	B (in)	C (in)
	1				
77572	1/2"	Bronze	1.051	0.866	1.732



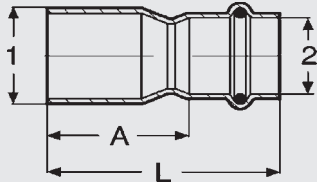
Reducer P x P				
Stock Code	Size	Material	A (in)	L (in)
	1	2		
78147	3/4" x 1/2"	Copper	0.445	2.071
15603	1" x 1/2"	Copper	0.736	2.362
78152	1" x 3/4"	Copper	0.504	2.287
15593	1-1/4" x 3/4"	Copper	0.728	2.638
78157	1-1/4" x 1"	Copper	0.614	2.524
18473	1-1/2" x 3/4"	Copper	0.994	3.327
15588	1-1/2" x 1"	Copper	0.768	3.071
78162	1-1/2" x 1-1/4"	Copper	0.528	2.959
18468	2" x 3/4"	Copper	1.524	4.016
15608	2" x 1"	Copper	1.319	3.780
22328	2" x 1-1/4"	Copper	0.827	3.425
78167	2" x 1-1/2"	Copper	0.846	3.827

Viega... The global leader in plumbing and heating systems.

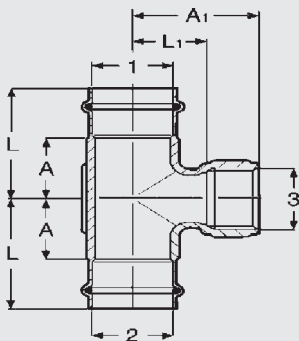
301 N. Main, 9th Floor • Wichita, KS 67202 • Ph: 800-976-9819 • Fax: 800-976-9817 • E-Mail: service@viEGA.com • www.viEGA.com



Dimensional Documentation



Reducer FTG x P				
Stock Code	Size	Material	A (in)	L (in)
	1 2			
78077	3/4" x 1/2"	Copper	1.417	2.165
78082	1" x 1/2"	Copper	1.693	2.441
78087	1" x 3/4"	Copper	1.417	2.323
22333	1-1/4" x 1/2"	Copper	2.185	2.933
78092	1-1/4" x 3/4"	Copper	1.850	2.756
78097	1-1/4" x 1"	Copper	1.575	2.480
79850	1-1/2" x 1/2"	Copper	2.008	2.756
14543	1-1/2" x 3/4"	Copper	2.559	3.465
78102	1-1/2" x 1"	Copper	2.283	3.189
78107	1-1/2" x 1-1/4"	Copper	2.047	3.071
79855	2" x 1/2"	Copper	2.913	3.661
79860	2" x 3/4"	Copper	2.874	3.780
78112	2" x 1"	Copper	3.031	3.937
78117	2" x 1-1/4"	Copper	2.795	3.819
78122	2" x 1-1/2"	Copper	2.638	4.055



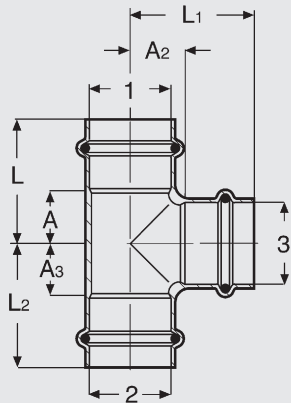
Tee P x P x F						
Stock Code	Size	Material	A (in)	A1 (in)	L (in)	L1 (in)
	1 2 3					
79580	1/2" x 1/2" x 1/2" NPT	Bronze	0.945	1.339	1.693	0.803
79585	3/4" x 3/4" x 1/4" NPT	Bronze	0.768	1.378	1.673	0.928
79590	3/4" x 3/4" x 1/2" NPT	Bronze	1.004	1.673	1.909	1.138
79595	3/4" x 3/4" x 3/4" NPT	Bronze				
79760	1" x 1" x 1/2" NPT	Bronze	1.004	1.772	1.909	1.236
79765	1" x 1" x 3/4" NPT	Bronze	1.161	1.969	2.067	1.343
79770	1-1/4" x 1-1/4" x 1/2" NPT	Bronze	0.886	1.929	1.909	1.323
79775	1-1/4" x 1-1/4" x 3/4" NPT	Bronze	0.945	1.929	1.969	1.303
79780	1-1/2" x 1-1/2" x 1/2" NPT	Bronze	0.748	1.969	2.165	1.433
79785	1-1/2" x 1-1/2" x 3/4" NPT	Bronze	0.886	2.087	2.303	1.461
79790	2" x 2" x 1/2" NPT	Bronze	0.984	2.165	2.559	1.630
79795	2" x 2" x 3/4" NPT	Bronze	1.083	2.362	2.657	1.736

Viega... The global leader in plumbing and heating systems.

301 N. Main, 9th Floor • Wichita, KS 67202 • Ph: 800-976-9819 • Fax: 800-976-9817 • E-Mail: service@viega.com • www.viega.com



Dimensional Documentation



Tee P x P x P										
Stock Code	Size			Material	A (in)	A2 (in)	A3 (in)	L (in)	L1 (in)	L2 (in)
	1	2	3							
77377	1/2"			Copper	0.738	0.498	0.738	1.496	1.443	1.496
77382	1-1/2" x 1-1/2" x 3/4"			Copper	0.906	0.591	0.906	1.654	1.496	1.654
15493	1-1/2" x 1-1/2" x 1"			Copper	1.102	0.551	1.102	1.850	1.457	1.850
77387	3/4"			Copper	0.837	0.591	0.837	1.752	1.496	1.752
77392	3/4" x 1/2" x 1/2"			Copper	0.687	0.630	0.984	1.594	1.378	1.732
77397	3/4" x 1/2" x 3/4"			Copper	0.844	0.591	1.142	2.752	1.496	1.890
77402	3/4" x 3/4" x 1/2"			Copper	0.687	0.630	0.687	1.594	1.378	1.594
77407	3/4" x 3/4" x 1"			Copper	0.965	0.630	0.965	1.870	1.535	1.870
77412	1"			Copper	0.955	0.787	0.955	1.870	1.693	1.870
22263	1" x 1/2" x 3/4"			Copper	0.846	0.748	1.240	1.752	1.654	1.988
94767	1" x 1/2" x 1"			Copper	0.978	0.787	1.516	1.870	1.693	2.264
77417	1" x 3/4" x 1/2"			Copper	0.703	0.787	0.886	1.594	1.535	1.791
77422	1" x 3/4" x 3/4"			Copper	0.837	0.748	1.043	1.752	1.654	1.949
77427	1" x 3/4" x 1"			Copper	0.709	0.787	1.161	1.870	1.693	2.067
77432	1" x 1" x 1/2"			Copper	0.689	0.787	0.689	1.594	1.535	1.594
77437	1" x 1" x 3/4"			Copper	0.844	0.748	0.844	1.752	1.654	1.752
15488	1" x 1" x 1 1/4"			Copper	1.161	0.837	1.161	2.067	1.870	2.067
77442	1 1/4"			Copper	1.024	0.866	1.024	2.047	1.890	2.047
22253	1-1/4" x 1/2" x 1-1/4"			Copper	1.024	0.866	1.772	2.047	1.890	2.520
22243	1-1/4" x 3/4" x 1/2"			Copper	0.650	0.925	1.122	1.673	1.673	2.028
22258	1-1/4" x 3/4" x 3/4"			Copper	0.768	0.866	1.299	1.791	1.772	2.205
22268	1-1/4" x 3/4" x 1"			Copper	0.886	0.906	1.398	1.929	1.811	2.303
22248	1-1/4" x 3/4" x 1-1/4"			Copper	1.024	0.866	1.535	2.047	1.890	2.441
22238	1-1/4" x 1" x 1/2"			Copper	0.650	0.925	0.906	1.673	1.673	1.811
94762	1-1/4" x 1" x 3/4"			Copper	0.768	0.866	1.142	1.791	1.772	2.047
14568	1-1/4" x 1" x 1"			Copper	0.886	0.906	1.280	1.909	1.811	2.185
94757	1-1/4" x 1-1/4" x 1/2"			Copper	0.650	0.925	0.650	1.673	1.673	1.673
77452	1-1/4" x 1-1/4" x 3/4"			Copper	0.768	0.886	0.768	1.791	1.772	1.791
77447	1-1/4" x 1-1/4" x 1"			Copper	0.886	0.906	0.886	1.909	1.811	1.909
77457	1-1/2"			Copper	1.142	1.142	1.142	2.559	2.559	2.559
79660	1-1/2" x 1" x 3/4"			Copper	0.906	1.299	1.063	2.323	2.205	1.969
15458	1-1/2" x 1" x 1"			Copper	0.738	1.063	1.535	2.165	1.969	2.441
15463	1-1/2" x 1" x 1-1/2"			Copper	1.132	1.132	1.831	2.559	2.559	2.736
22233	1-1/2" x 1-1/4" x 3/4"			Copper	0.669	1.142	1.083	2.087	2.047	2.106
15453	1-1/2" x 1-1/4" x 1"			Copper	0.738	1.181	1.289	2.165	2.087	2.323
15483	1-1/2" x 1-1/4" x 1-1/4"			Copper	0.886	1.142	1.339	2.283	2.165	2.362
15448	1-1/2" x 1-1/2" x 1/2"			Copper	0.463	1.102	0.463	1.890	1.850	1.890
77462	1-1/2" x 1-1/2" x 3/4"			Copper	0.669	1.142	0.669	2.087	2.047	2.087
77467	1-1/2" x 1-1/2" x 1"			Copper	0.748	1.181	0.748	2.165	2.087	2.165
77472	1-1/2" x 1-1/2" x 1-1/4"			Copper	0.886	1.142	0.866	2.283	2.165	2.283
77477	2"			Copper	1.378	1.378	1.378	2.953	2.953	2.953

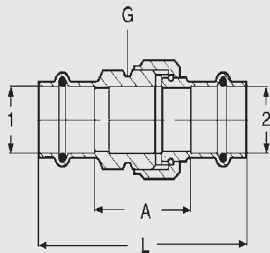
Continued on next page

Viega... The global leader in plumbing and heating systems.

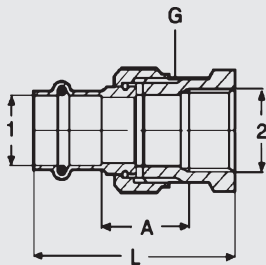
301 N. Main, 9th Floor • Wichita, KS 67202 • Ph: 800-976-9819 • Fax: 800-976-9817 • E-Mail: service@viega.com • www.viega.com

Dimensional Documentation

Tee P x P x P (continued from previous page)										
Stock Code	Size			Material	A (in)	A2 (in)	A3 (in)	L (in)	L1 (in)	L2 (in)
	1	2	3							
15518	2"	1-1/4"	1-1/4"	Copper	0.935	1.329	1.841	2.520	2.362	2.874
15498	2"	1-1/2"	1"	Copper	0.817	1.378	1.447	2.402	2.283	2.874
15513	2"	1-1/2"	3/4"	Copper	0.709	1.378	1.260	2.283	2.283	2.677
15508	2"	1-1/2"	1-1/4"	Copper	0.935	1.486	1.545	2.520	2.520	2.972
15503	2"	1-1/2"	1-1/2"	Copper	1.142	1.378	1.654	2.717	2.795	3.071
22228	2"	1-1/2"	2"	Copper	1.378	1.378	1.890	2.953	2.953	3.327
15538	2"	2"	1/2"	Copper	0.541	1.299	0.541	2.126	2.047	2.126
94777	2"	2"	3/4"	Copper	0.797	1.260	0.797	2.372	2.165	2.372
94772	2"	2"	1"	Copper	0.915	1.299	0.915	2.490	2.205	2.490
77487	2"	2"	1-1/4"	Copper	1.043	1.378	1.043	2.618	2.402	2.618
77482	2"	2"	1-1/2"	Copper	1.142	1.378	1.142	2.717	2.795	2.717



Union P x P						
Stock Code	Size		Material	A (in)	L (in)	G (in)
	1	2				
79215	1/2"		Bronze	1.260	2.756	3/4
79130	3/4"		Bronze	1.335	3.146	1
79135	1"		Bronze	1.827	3.638	1-1/4
79140	1-1/4"		Bronze	1.634	3.681	1-1/2
79145	1-1/2"		Bronze	2.126	4.962	2
79150	2"		Bronze	2.067	5.217	2-1/2

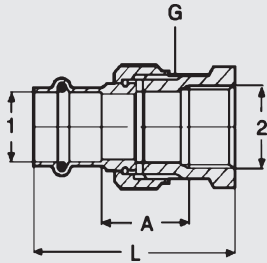


Union P x FNPT						
Stock Code	Size		Material	A (in)	L (in)	G (in)
	1	2				
79700	1/2"	1/2" NPT	Bronze	0.961	2.244	3/4
79705	3/4"	3/4" NPT	Bronze	0.957	2.417	1
79710	1"	1" NPT	Bronze	1.303	2.870	1-1/4
79715	1-1/4"	1-1/4" NPT	Bronze	1.268	2.972	1-1/2
79720	1-1/2"	1-1/2" NPT	Bronze	1.760	3.858	2
79725	2"	2" NPT	Bronze	1.646	3.917	2-1/2

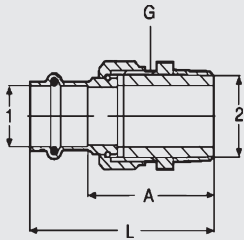
Viega... The global leader in plumbing and heating systems.

301 N. Main, 9th Floor • Wichita, KS 67202 • Ph: 800-976-9819 • Fax: 800-976-9817 • E-Mail: service@viega.com • www.viega.com

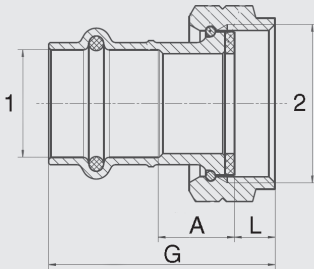
Dimensional Documentation



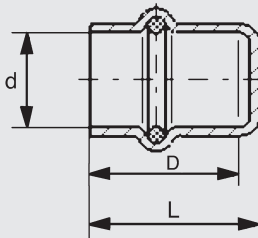
Di-electric Union P x FNPT						
Stock Code	Size		Material	A (in)	L (in)	G (in)
	1	2				
79155	1/2" x 1/2" NPT		Bronze	0.961	2.244	1-1/4
79160	3/4" x 3/4" NPT		Bronze	1.110	2.571	1-1/2
79165	1" x 1" NPT		Bronze	1.004	2.571	1-1/2
79170	1-1/4" x 1-1/4" NPT		Bronze	0.972	2.677	2
79175	1-1/2" x 1-1/2" NPT		Bronze	1.004	3.102	2-1/4
79180	2" x 2" NPT		Bronze	1.260	3.531	2-3/4



UnionP x MNPT						
Stock Code	Size		Material	A (in)	L (in)	G (in)
	1	2				
79730	1/2" x 1/2" NPT		Bronze	2.087	2.835	3/4
79735	3/4" x 3/4" NPT		Bronze	2.142	3.047	1
79740	1" x 1" NPT		Bronze	2.732	3.638	1-1/4
79745	1-1/4" x 1-1/4" NPT		Bronze	2.677	3.701	1-1/2
79750	1-1/2" x 1-1/2" NPT		Bronze	3.228	4.646	2
79755	2" x 2" NPT		Bronze	3.169	4.744	2-1/2



Tailpiece Adapter P x F Union						
Stock Code	Size		Material	A (in)	L (in)	G (in)
	1	2				
79800	1/2" x 1" BSP		Bronze	0.393	0.354	1.496
79805	3/4" x 1" BSP		Bronze	0.629	0.334	1.870
79810	1" x 1" BSP		Bronze	0.807	0.334	2.047
79815	1" x 1-1/4" BSP		Bronze	0.728	0.413	2.047

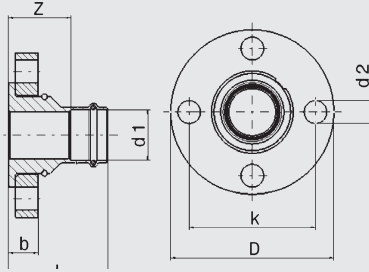


Cap P					
Stock Code	Size		Material	L (in)	D (in)
	d				
77712	1/2"		Copper	.917	0.799
77717	3/4"		Copper	1.067	0.945
77722	1"		Copper	1.110	0.992
77727	1-1/4"		Copper	1.181	1.024
77732	1-1/2"		Copper	1.622	1.465
77737	2"		Copper	1.811	1.575

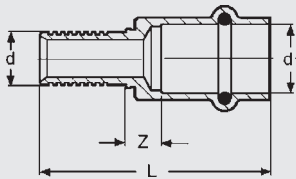
ViEGA... The global leader in plumbing and heating systems.

301 N. Main, 9th Floor • Wichita, KS 67202 • Ph: 800-976-9819 • Fax: 800-976-9817 • E-Mail: service@viEGA.com • www.viEGA.com

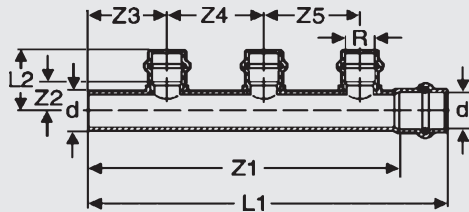
Dimensional Documentation



Adaptor Flange P x Flange									
Stock Code	Size	Material	L (in)	Z (in)	b1 (in)	b2 (in)	D (in)	K (in)	d2 (in)
	d1								
79680	1"	Bronze	2.756	1.850	0.630	0.827	4.331	3.110	0.630
79685	1-1/4"	Bronze	2.756	1.850	0.630	0.827	4.528	3.504	0.630
79690	1-1/2"	Bronze	3.071	1.654	0.630	0.827	4.921	3.858	0.630
79695	2"	Bronze	3.661	2.087	0.630	0.827	5.906	4.764	0.748



PureFlow/ProPress Adapter PEX x P				
Stock Code	Size	Material	L (in)	Z (in)
	d			
67620	1/2" x 1/2"	Copper	1.575	0.236
67626	1/2" x 3/4"	Copper	1.831	0.335
67627	5/8" x 1/2"	Copper	1.496	0.157
67628	5/8" x 3/4"	Copper	1.831	0.335
67630	3/4" x 1/2"	Copper	1.417	0.079
67640	3/4" x 3/4"	Copper	1.732	0.236
67660	1" x 1"	Copper	1.969	0.315



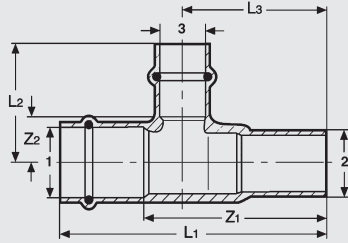
ProPress Manifold 3-Outlets (open) P x FTG x P									
Stock Code	Size	Material	L1 (in)	L2 (in)	Z1 (in)	Z2 (in)	Z3 (in)	Z4 (in)	Z5 (in)
	d x R								
65803	1" x 1/2"	Copper	7.323	1.512	6.378	0.773	1.654	1.969	1.969

ViEGA... The global leader in plumbing and heating systems.

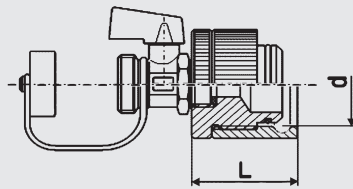
301 N. Main, 9th Floor • Wichita, KS 67202 • Ph: 800-976-9819 • Fax: 800-976-9817 • E-Mail: service@viEGA.com • www.viEGA.com



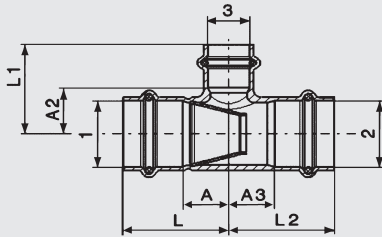
Dimensional Documentation



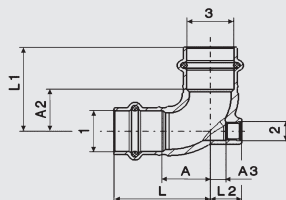
ProPress Manifold 1-Outlet (open) P x FTG x P							
Stock Code	Size	Material	Z1 (in)	Z2 (in)	L1 (in)	L2 (in)	L3 (in)
	1 x 2 x 3						
65801	1" x 1" x 1/2"	Bronze	2.500	.0787	3.661	1.535	2.067



Bronze Pressure Test Plug			
Stock Code	Size	Material	L (in)
	d		
78202	1/2"	Bronze	1.654
78207	3/4"	Bronze	1.654
78212	1"	Bronze	1.654
78217	1-1/4"	Bronze	1.654
78222	1-1/2"	Bronze	1.811
78227	2"	Bronze	1.929



Venturi Tee P x P x P										
Stock Code	Size			Material	A (in)	A2 (in)	A3 (in)	L (in)	L1 (in)	L2 (in)
	1	2	3							
23388	3/4"	3/4"	1/2"	Copper	0.689	0.630	0.433	1.594	1.378	1.594
23393	1"	1"	1/2"	Copper	0.689	0.787	0.689	1.594	1.535	1.594
23398	1"	1"	3/4"	Copper	0.846	0.748	0.591	1.752	1.654	1.752
23403	1-1/4"	1-1/4"	1/2"	Copper	0.650	0.925	0.650	1.673	1.673	1.673
23408	1-1/4"	1-1/4"	3/4"	Copper	0.768	0.866	0.768	1.791	1.772	1.791



Vent Tee P x FNPT x P										
Stock Code	Size			Material	A (in)	A2 (in)	A3 (in)	L (in)	L1 (in)	L2 (in)
	1	2	3							
79635	1/2"	1/8" NPT	1/2"	Bronze	0.748	0.748	0.315	1.496	1.496	0.591
79640	3/4"	1/8" NPT	3/4"	Bronze	0.906	0.906	0.315	1.811	1.811	0.591

Viega... The global leader in plumbing and heating systems.

301 N. Main, 9th Floor • Wichita, KS 67202 • Ph: 800-976-9819 • Fax: 800-976-9817 • E-Mail: service@viega.com • www.viega.com